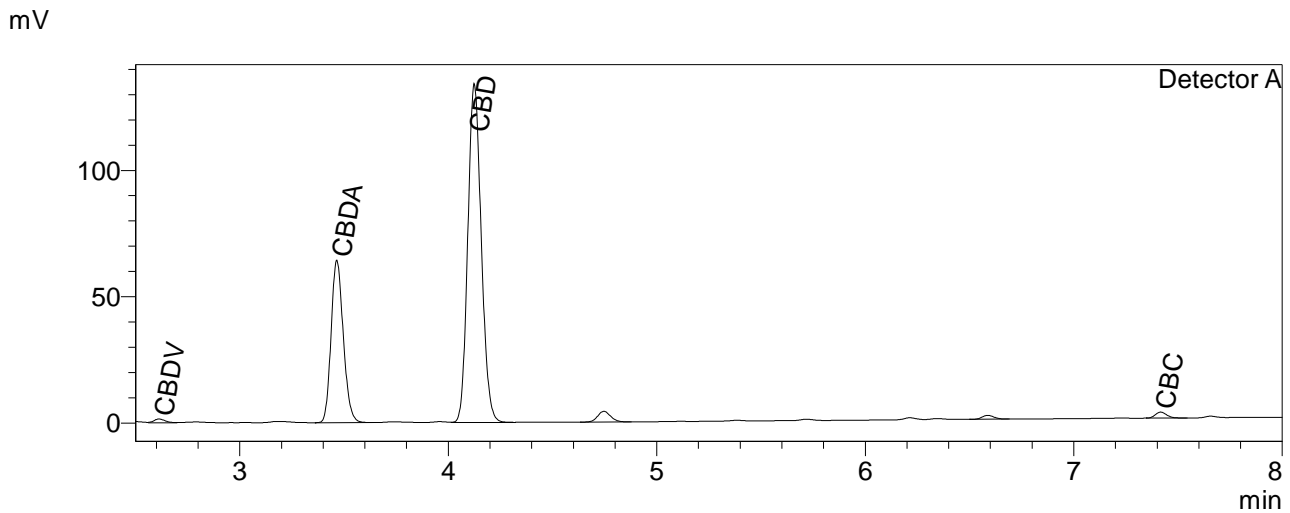




CERTIFICATE OF ANALYSIS

Chromatogram



Quantitative Results

Compound Name	Concentration, %
CBDV	0.124
CBDA	4.516
CBGA	--
CBG	--
CBD	14.292
THCV	--
CBN	--
CBC	0.227
THCA-A	--

-- — compound not detected.

Sample information

Batch number: GK 14
Product description: Hemp Drops 1800 R
Product type: RAW
Total CBD concentration: 18 % (1800 mg)
Manufacture date: April 2020

Summary

Total CBD (CBD + CBDa)	18.25	%
Total CBD (CBD + CBDa)	182.53	mg/g

Instrumental and analytical conditions.

Sample preparation: 0.01 g (± 0.00001) of homogenous sample was diluted with 1 mL of HPLC grade methanol. Diluted sample was mixed, vortexed and centrifuged. Then the mixture was diluted again to a final concentration of 0.1 mg/mL. Peak identification and quantification was performed by comparing retention times and UV absorption spectra of the samples with those of the standard solutions.

Equipment: Quantitative analysis was performed using Shimadzu Cannabis Analyzer for Potency - an integrated HPLC system with built-in sample cooler, degasser, autoinjector and UV detector. NexLeaf CBX for potency, 2.7 μ m, 4.6 x 150 mm column coupled with NexLeaf CBXGuard column was eluted by using a mixture of mobile phase A (0.085% phosphoric acid in water) and mobile phase B (0.085% phosphoric acid in Acetonitrile) with a flow rate of 1.6 mL/min at 35°C. Sample injection volume was set to 5 μ L. Gradient program was used - 70% B for 3 min, 70-85% B over 4 min, 85-95% B over 0.01 min; 95% B for 0.99 min; 95-70% B over 0.01 min; 70% B for 1.99min. Data was analyzed using Shimadzu LabSolutions software.